

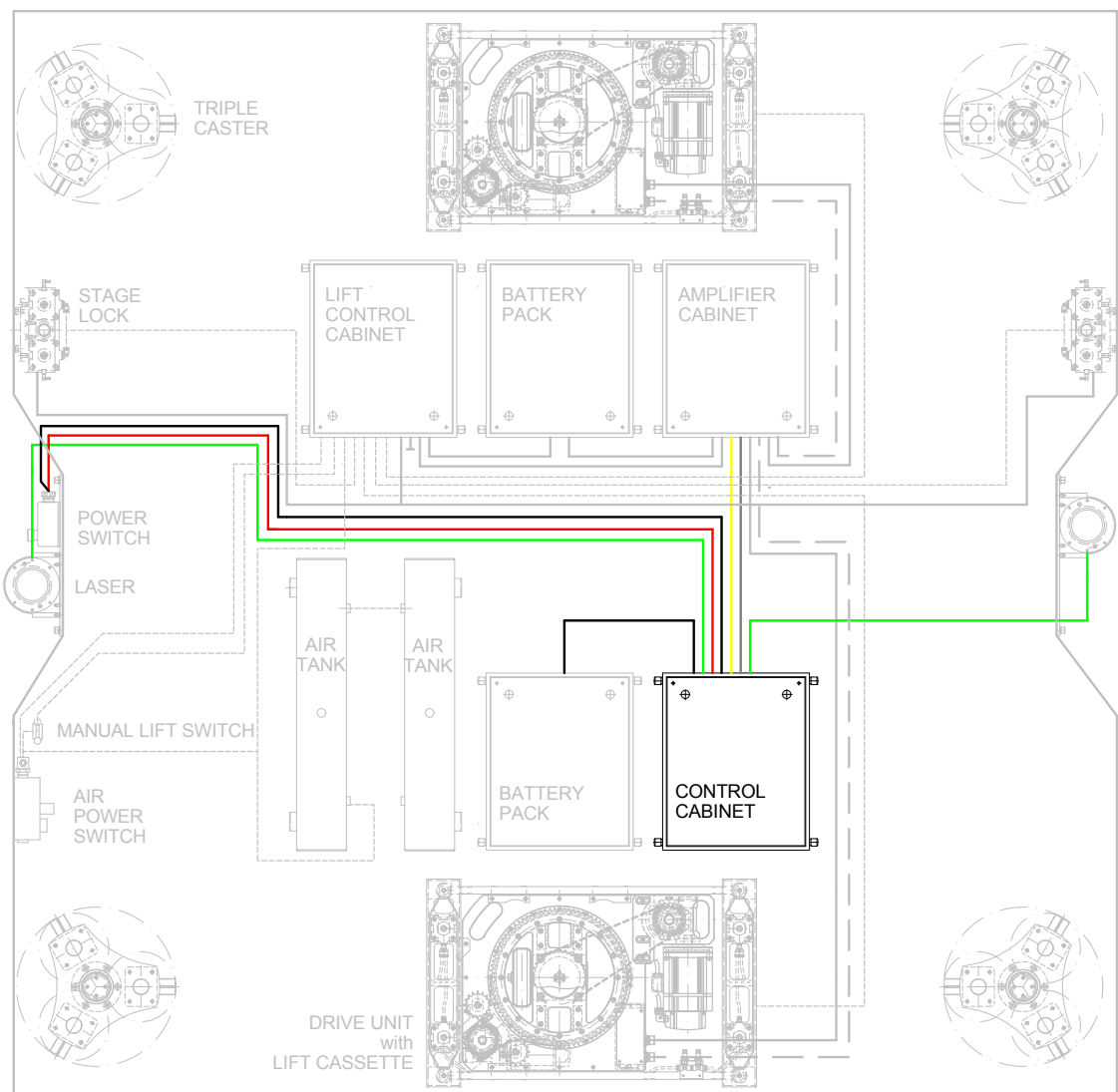
Wagon Controller

Technical Data Sheet

The wagon controller cabinet is the central processing unit for an advanced wagon.

The controller includes:

- Operating computer
- Navigation computer
- Emergency stop relay
- Redundant communication radio system
- Emergency stop radio system



Specifications

- | | |
|---------------------------------|---------------------------------|
| • Maximum drive units | 10 |
| • Emergency stop radio | 434,725 MHz |
| • Power supply | 120VDC |
| • Power (with 2 laser scanners) | 150 W |
| • Size | 391 × 150 × 472 (600 W /cables) |
| • Weight | 24 kg |
| • Temperature range | 0 to +40 |

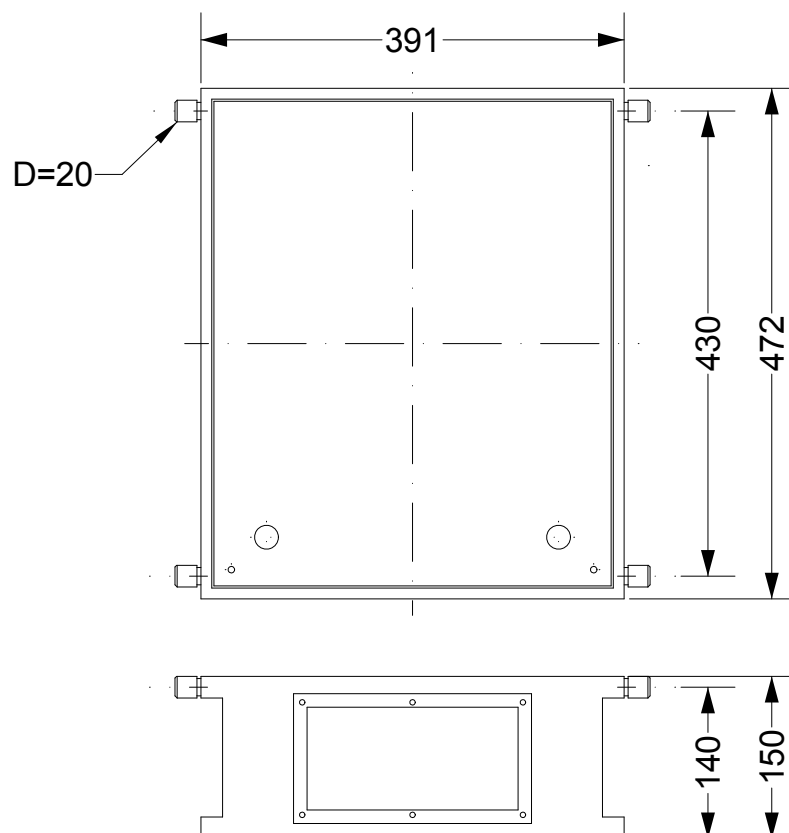
Dimension drawing

Connections

• Power	2 (in and out)
• Antenna	1 x 2.4 Gh, 1 x 5 Gh
• System bus	1
• Quick stop box	1
• Laser scanners	2
• Hand control	1

Options and accessories

W - LAS	Laser scanner
W - CBL - ANT - 0x	Antenna cable – 1 to 6 meters
W - CBL - LAS - xx	Laser cable – 1 to 20 meters
W - CBL - LASADP	Laser adapter (cable to scanner) 0.25 meters
W - CBL - PWR - xx	Power cable – 1 to 20 meters
W - CBL - CAN - xx	System bus cable – 1 to 20 meters
W - CAB - HOAC - x	Hanging bracket for HOAC profile, pieces



The information provided in this document is intended for informational purposes only and is subject to change without notice. Information may be changed or updated without notice. Visual act AB may also make improvements and/or changes in the products, described in this information at any time without notice.

Contact information, rentals & sales

Värmdövägen 703, SE-132 35 Saltsjö-Boo, Sweden
+46 (0)8 522 472 00 / vact@visualact.se / www.visualact.se