

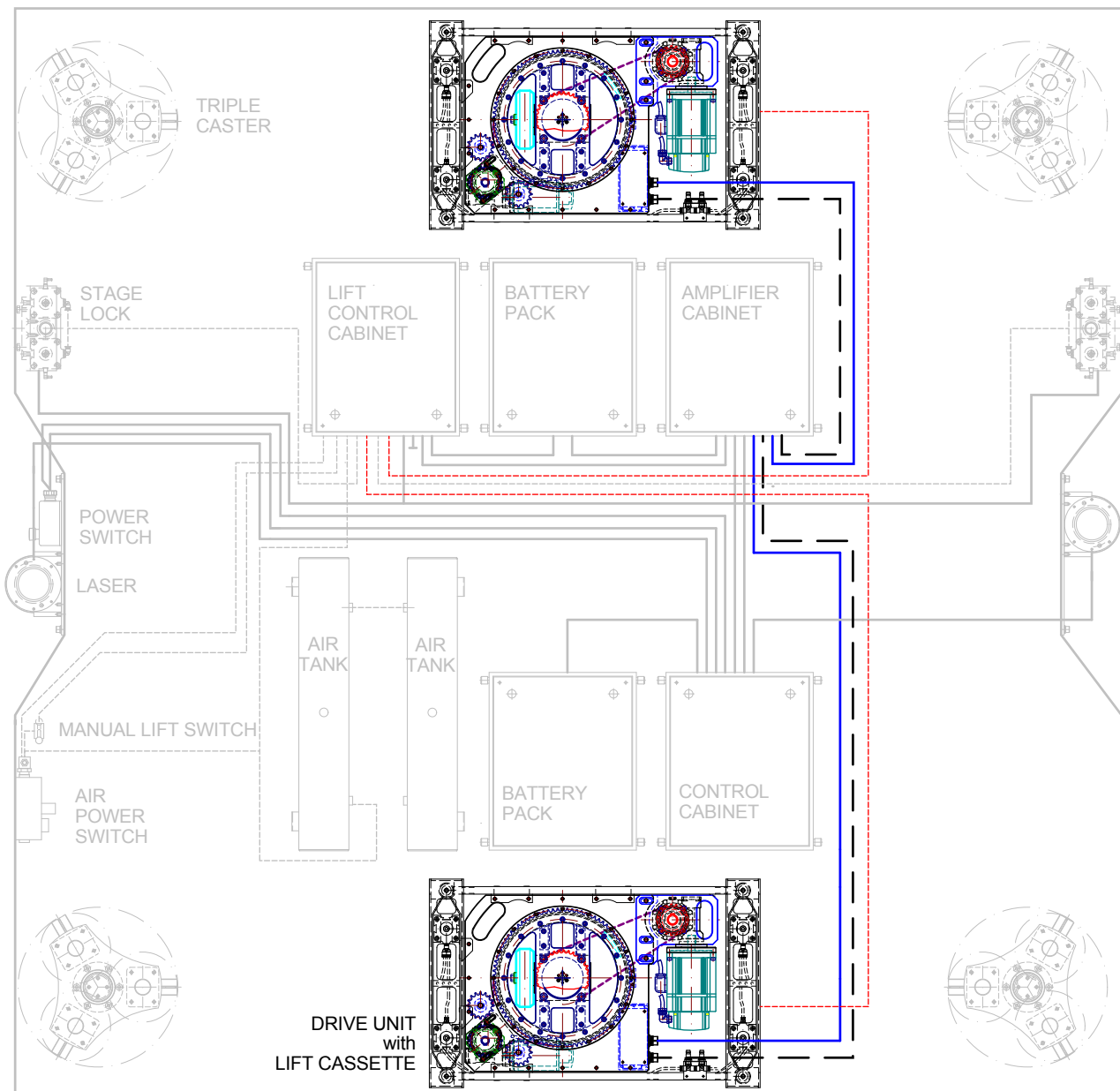
# Lift Cassette

The Lift Cassette is an optional add-on that is highly recommended. Lift cassettes allow drive units to be lifted from the floor so as to provide redundancy. They also ensure that the pressure of the drive unit wheel against the floor remains constant, even if the floor is not flat or if the load on the wagon changes.

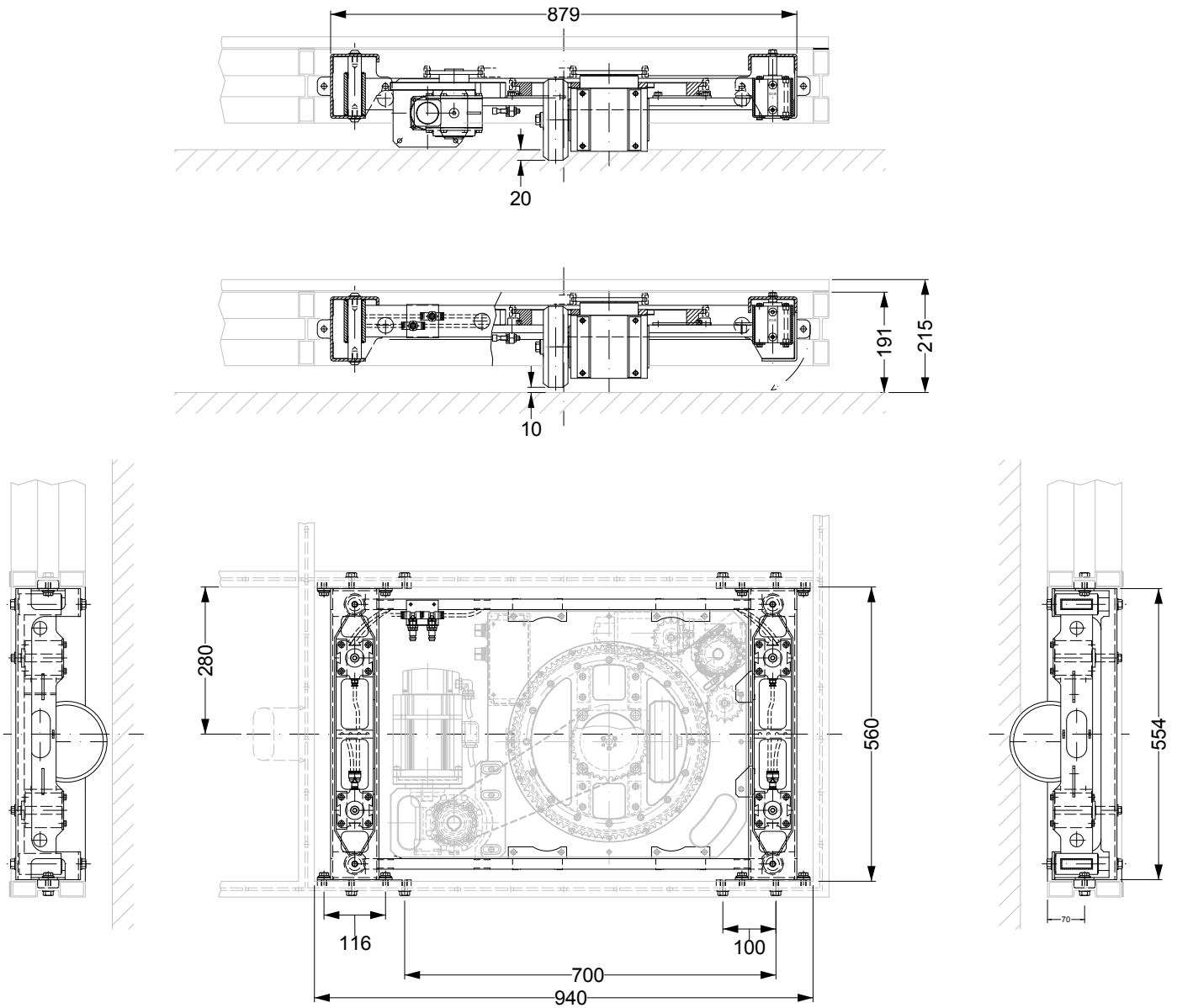
A lift control system is used to control lift cassettes. Both manual and automated systems are available. The automated system allows the operator to raise and lower drive units from the operator desk.

## Specifications:

- Force against floor at 3 bar                    3000 N (20 MPa)
- Force against floor at 5.6 bar                5000 N (34 MPa)
- Stroke    30 mm (-20/+10)



## Dimension drawing



The information provided in this document is intended for informational purposes only and is subject to change without notice. Information may be changed or updated without notice. Visual act AB may also make improvements and/or changes in the products, described in this information at any time without notice.

### Contact information, rentals & sales

Värmdövägen 703, SE-132 35 Saltsjö-Boo, Sweden  
+46 (0)8 522 472 00 / [vact@visualact.se](mailto:vact@visualact.se) / [www.visualact.se](http://www.visualact.se)