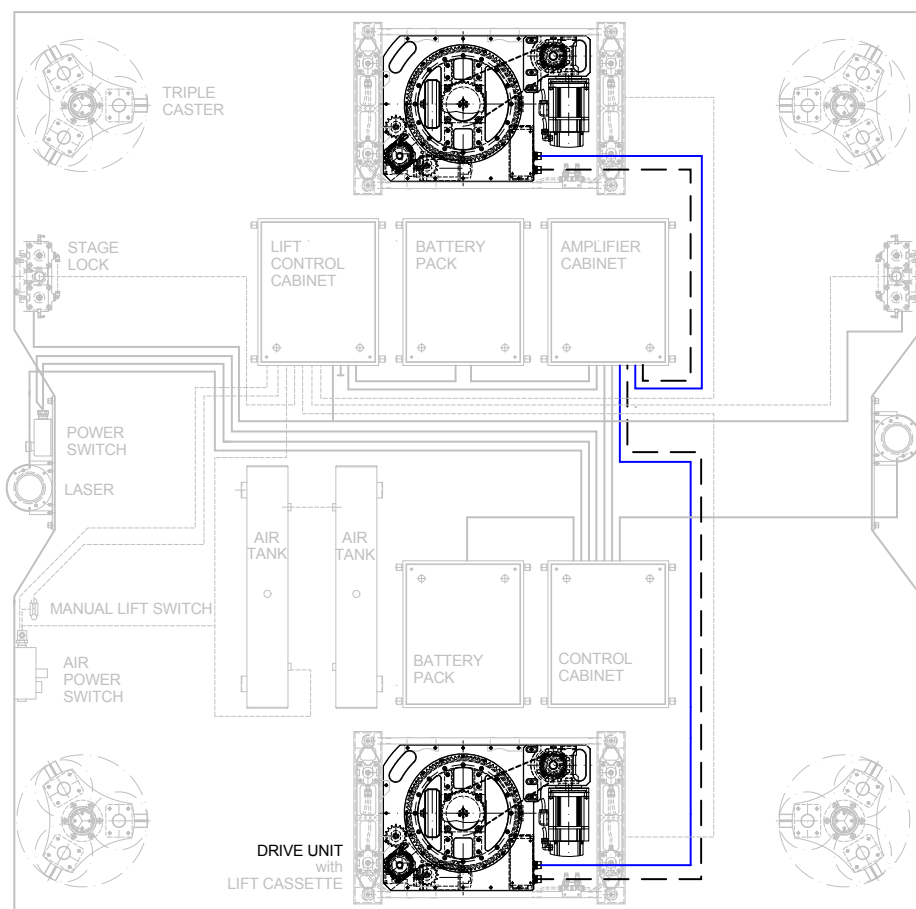


# Drive Unit DU22

## Technical Data Sheet

The patented design of the Visual act drive unit allows the drive wheel to rotate without damage to any floor, including canvas or dance floors. This in a package that can be built into a wagon with a height of only 200 mm.

Drive units have the capacity to move from 1000 kg to 2500 kg at speeds up to 1 m/s or more. The capacity of a drive unit is a balance among available current, motor inertia and friction, friction being dependant on the force against the floor and the properties of the wheel material. We recommend using the Visual act Design Tool to calculate the requirements for a wagon for a specific speed and load.



### Model number

W - DU22x - 01 - S

Drive Unit	Options
DU22	S = Studed tire for ice
DU22A = Analog PLUS Wagon	
	Speed*
	01 = 1 m/s - Horizontal capacity* 1000 kg
	05 = 0.5 m/s - Horizontal capacity* 3000 kg
	06 = 0,75 m/s - Horizontal capacity* 2500 kg
	03 = 1 m/s (Analog PLUS Wagon) - Horizontal capacity* 1000 kg
	04 = 0.5 m/s (Analog PLUS Wagon) - Horizontal capacity* 3000 kg

\* Capacity will depend on the pressure of the wheel against the floor, the condition of the floor and the rolling friction of passive wheels or air casters.

## Dimension drawing

### Accessories

W - CBL - MOTPWR - xx

Motor power cable – 1 to 20 meters

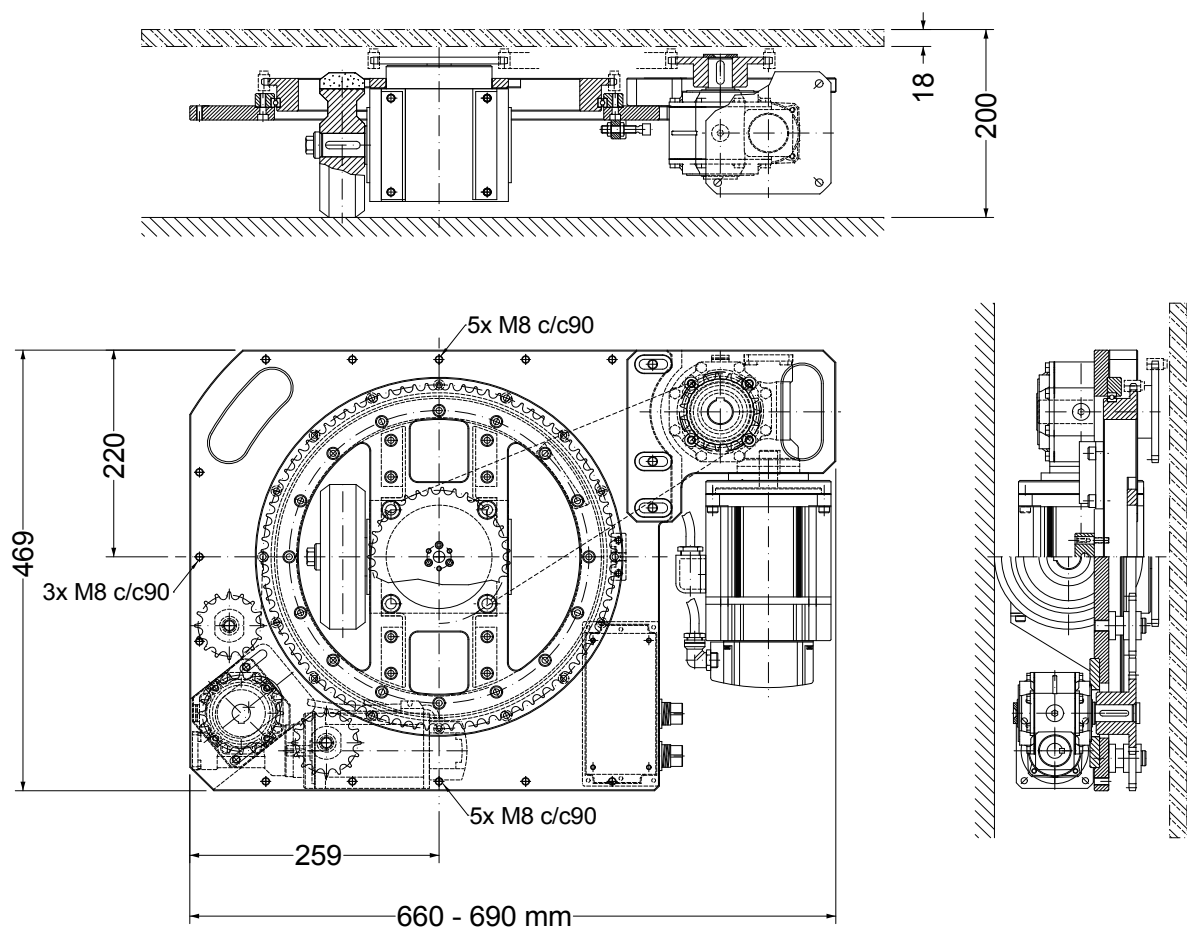
W - CBL - MOTSIG - xx

Motor signal cable – 1 to 20 meters

Mounting cassettes are available to control pressure against the floor and allow for redundancy.  
See *separate datasheet*.

### Specifications

- Maximum vertical load 600 kg
- Speed 0-1 m/s
- DU height 180 mm
- DU weight 60 kg
- Power 1500 W
- Motor type Synchronous servo
- Drive wheel diameter 154 mm
- Shore hardness 92, others available
- Connections 1 x power, 1 x signal



The information provided in this document is intended for informational purposes only and is subject to change without notice. Information may be changed or updated without notice. Visual act AB may also make improvements and/or changes in the products, described in this information at any time without notice.

### Contact information, rentals & sales

Värmdövägen 703, SE-132 35 Saltsjö-Boo, Sweden  
+46 (0)8 522 472 00 / vact@visualact.se / www.visualact.se